

Holiday Shopping at the Penn Museum

December 2-5 the Penn Museum offers international celebration, music, shopping and family fun to bring everyone, of every culture, into the spirit of the season!

Thursday, December 2, 6:30 to 9 p.m.

Holiday Evening Program: *Magnificent Objects!*

Since its founding in 1887, Penn Museum has explored sites the world over, assembling collections of objects that provide telling clues about the past and present human cultures. The Museum recently celebrated its internationally renowned collection with the spring 2004 publication of *Magnificent Objects*, the first full-color "treasures" book filled with diverse objects from across continents and throughout several millennia. During this fun evening of celebration, curators and staff of Penn Museum show off their favorite objects from the collection—many of which have never been on display.

The Museum's three shops join in the celebration, with a special sale of the book *Magnificent Objects*—and their own holiday selection of magnificent objects, brought in from fair trade cooperatives that assist communities internationally. Visitors enjoy a 10% shop discount; 20% for members! Includes dessert reception. \$30 non-members; \$20 members. Information: (215) 898-4890.

Friday, December 3, 10 a.m. to 4:30 p.m.

Penn Community Spectacular: *Holiday Shopping and Celebration*

Penns students, staff and faculty, HUP employees, and CHOP employees are invited to a special shopping day. Show your Penn, HUP or CHOP ID card and enjoy a 15% discount on purchases in all three shops!

Saturday, December 4, and Sunday, December 5 the Penn Museum Shops will be offering holiday discounts of 10% for non-members and 15% for members. The shop, known for its unusual and one-of-a-kind merchandise from around the world, features products created by international artists and non-profit groups working to better the lives of families and communities that they support. These products include decorative bowls, candlesticks, table coverings, wall hangings, and handmade greeting cards from Africa, knit products from Kenana Knitters of Kenya, Christmas ornaments and other designs from South Africa, home décor from Mali, jewelry from East Afghanistan, handicrafts from Guatemala and Nicaragua, and many more unique gift ideas.

Over this weekend several cooperative leaders will be in the shop to talk about their products and share stories of how their programs are run, and how they are making a difference in communities. The Museum Shop is open Tuesday—Saturday 10 a.m. to 4:30 p.m. and Sunday 1 to 5 p.m.

The Pyramid Shop for Children at the Museum will be offering holiday discounts of 10% on purchases over \$5 and 15% for members. The shop offers an unusual international selection of holiday gifts. The shop is a stocking stuffer paradise, featuring many small and unusual games, toys and crafts, ranging from small ancient Roman metal soldiers to Guatemalan worry dolls, to Chinese Zodiac necklaces. The shop also features mini-booklets with fun-to-use activities, activity kits, picture books, and even hieroglyphic decoders. The Pyramid Shop is open Tuesday—Friday 10 a.m. to 3:30 p.m., Saturday 11 a.m. to 4:30 p.m., and Sunday 1 to 5 p.m.

Sunday, December 5, 1 to 4:30 p.m.

Family Holiday Event: *Peace Around the World*

"Smile, Laughter, Friends!" is the theme of this year's 9th annual holiday family celebration—and Penn Museum's wish for a world at peace—featuring many-cultured music and entertainment throughout the galleries. The fun-filled day includes the music of children and adult choirs, international dancing, games, face painting, holiday craft workshops, free treats for children and more. International students from International House of Philadelphia join the celebration; visitors can meet them and collect the words "Peace Around the World" written in different languages. The Museum's three shops offer special holiday discounts (10%; 20% for members) and international fair trade cooperative crafts! Free. Information: (215) 898-4890.

WOC Arts & Crafts Fair and Silent Auction

Women of Color at Penn is sponsoring an Arts and Crafts Fair. The event will take place on Friday, December 3, in Houston Hall's Reading and Bistro Room from 11 a.m. to 5 p.m. Vendors will be selling holiday gifts for family, friends, and others.

There will also be a Silent Auction, including a basketball signed by Wilt Chamberlain. Merchandise will be on view from 11 a.m. until noon, with bidding from noon-2 p.m.

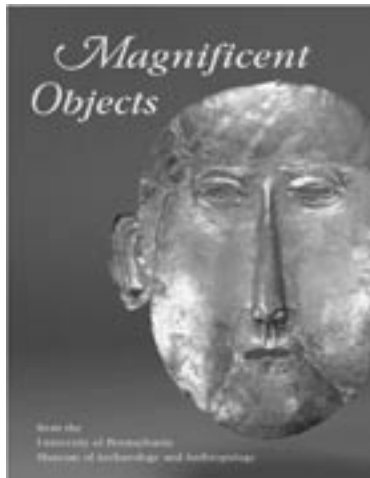
For more information contact Afi Roberson Heywood at (215) 898-0104 or at roberson@pobox.upenn.edu.

WPSA Holiday Bazaar

The Penn Weekly-Paid Professional Staff Assembly (WPSA) is sponsoring a Holiday Bazaar on Friday, December 17, in Houston Hall from noon to 4 p.m. There will be entertainment, and refreshments throughout the event and vendors selling holiday gifts. The Holiday Bazaar is open to children of all ages, so please come out and celebrate the holiday season with us.

For further information, contact Candice Milbourne at (215) 898-6993 or e-mail candicem@pobox.upenn.edu. Visit the WPSA online at www.upenn.edu/wpsa/Holiday.htm.

—Candice C. Milbourne, WPSA Vice Chair



Tree Talk at Arboretum

On Sunday, December 12, the Morris Arboretum will host a lecture promoting its newly released book, *Trees of Pennsylvania: A Complete Reference Guide*. The lecture, *Pennsylvania Trees—A Natural History*, will be given by the authors, director of botany Timothy Block and senior botanist Ann Rhoads. Drs. Block and Rhoads will discuss their new book, the latest publication to come out of the Arboretum's state flora efforts which date back to 1933. *Trees of Pennsylvania* is a guide to the more than 200 species of trees that are native or naturalized in the Commonwealth. The book was written with a non-technical audience in mind, and includes detailed information for each species including habitat, characteristics of leaves, flowers and fruits, size and location of the states largest trees, economic value and much more.

Copies of the book will be available for sale and the authors will be available following the lecture for a book signing. The lecture, which will take place from 2-3 p.m., is free to Arboretum members and PennCard holders and \$5 for nonmembers. Reservations are required, please call (215) 247-5777, ext. 169.



For dozens of other books by Penn-affiliated authors—faculty, staff, and alumni—see the centerspread.

Penn Groups' CDs

Some of Penn's performing arts groups have new CDs out this year, including Counterparts, Pennyloafers, and Full Measure, available online. The Penn Bookstore carries CDs by the Glee Club and the Penn Band.



Counterparts, the self-titled album from the jazz and pop award-winning a cappella group, \$15 plus \$3 for shipping and handling; to order online see www.upenncounterparts.com.



Penny Loafers, a coed a cappella group that focuses on current pop and rock music has released their latest studio recording, *Barely Legal*; see <http://dolphins.upenn.edu/~loafers/> to order, e-mail ercole@sas.upenn.edu.

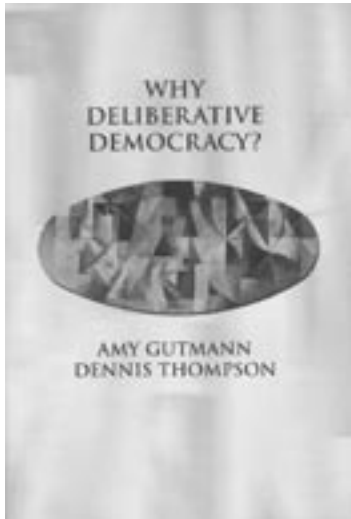


Fabulous Finds for Those Fond of Facts or Fiction

Want a special gift for the book-lovers on your gift list? Well, there are numerous books hot-off-the-press this year. The Penn Bookstore has many to choose from—factual and fictional, personal and pictorial, historical and innovative. These are some of the many new books by Penn authors—with selections from Penn's new president, Penn alumni, faculty and staff. Not only are there books from the Penn Press, but there are also options from the Penn Museum, the Morris Arboretum, and the newest publisher on campus, the Wharton School Publishing.

A number of these have a Philly flavor while several have an international angle.

For shoppers who want to preview the selection online, visit www.museum.upenn.edu for the Museum's collection, www.upenn.edu/pennpress for the Penn Press possibilities, www.business-services.upenn.edu/arboretum/giftshop2.html for the Arboretum's selection and www.whartonsp.com for Wharton Publishing's just released titles.



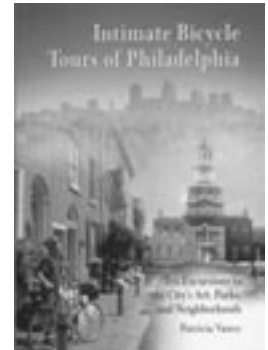
Why Deliberative Democracy?; Penn President Amy Gutmann, and Dennis Thompson. What exactly is deliberative democracy? Why is it more defensible than its rivals? By offering clear answers to these timely questions, they illuminate the theory and practice of justifying public policies in contemporary democracies. Paper \$16.95, Cloth \$55.



Historic Sacred Places of Philadelphia; Roger W. Moss (adjunct professor of architecture), with photographs by Tom Crane. This opulent volume will serve as a guide through the architectural and religious traditions of Philadelphia, complete with maps, telephone numbers, and websites, so the reader can visit these sacred places in person. Penn Press. Cloth \$34.95.



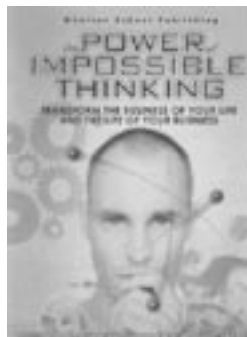
Museums of Philadelphia: A Guide for Residents and Visitors; Laura C. Waldron, Penn Press marketing director. Useful guide to the more than 100 permanent Philadelphia collections open to the public, including the largest number of historic-house museums in the country. Paper \$14.95.



Intimate Bicycle Tours of Philadelphia; Patricia Vance, research specialist, hematology department, School of Medicine. In a series of ten short, easy routes, she takes readers through vibrant Philadelphia neighborhoods, revealing a treasure trove of cultural riches normally missed when traveling by car. Penn Press. Paper \$16.50.



University of Pennsylvania (College History Series); Amey A. Hutchins, manuscripts cataloger, Rare Book & Manuscripts Library, with the University Archives. A unique photographic collection, focusing on the school's history at its present campus in West Philadelphia beginning shortly after the end of the Civil War and providing images of more than a century of student life inside and outside the classroom. Paper \$19.99.



The Power of Impossible Thinking: Transform the Business of Your Life and the Life of Your Business; Jerry Wind, Robert Gunther, Colin Crook. Drawing on the latest neuroscientific research and their experience with corporate transformations they explain how your mental models stand between you and reality, distorting all your perceptions ... and how they create both limits and opportunities. Wharton School Publishing. Cloth \$24.95.



Help Wanted, Desperately; Ariel Horn, C '02. Determined to secure a job in New York City, Alexa Hoffman, the 21-year-old Penn senior at the center of Ariel Horn's debut novel, has got exactly seven months, three weeks and two days before her initiation into the real world. Blithe and fresh-voiced, this book covers almost every tribulation of entering adulthood, forging a career and falling in love, against the odds. Paper \$12.95.



The Big Love: A Novel; Sarah Dunn, C '91. A fresh and hilarious debut novel about commitment, competition, and the occasional joys of unencumbered sex, for readers of *Pride and Prejudice* to *The Girls' Guide to Hunting and Fishing*. Cloth \$21.95.

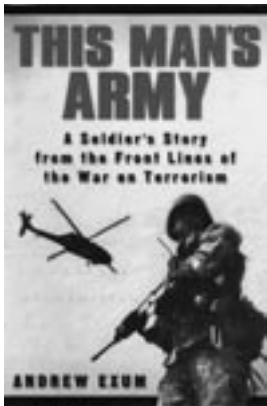


Leaving Cecil Street; Diane McKinney-Whetstone, CW '75. As she did in her previous novels *Tumbling and Blues Dancing*, she once again renders time and place, character and emotional intensities. It is 1969 and Cecil Street is "feeling some kind of way," so the residents decide to have two block parties this year. These energetic, sensual street celebrations serve as backdrop to the stories of the people on the block. Cloth \$24.95.

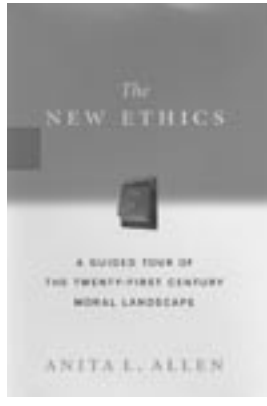
Mercy, M Loves, and Gaye; M Avalon F in the H acclaimed remarkable death from the Holler If \$23.95.



You Hear Me: The Art and Demons of Marvin Gaye; Eric Dyson, University of Pennsylvania Foundation Professor of Humanities. A widely respected assessment of the life, art, struggles, and death of an American icon, by the celebrated author of *You Hear Me*. Cloth \$25.



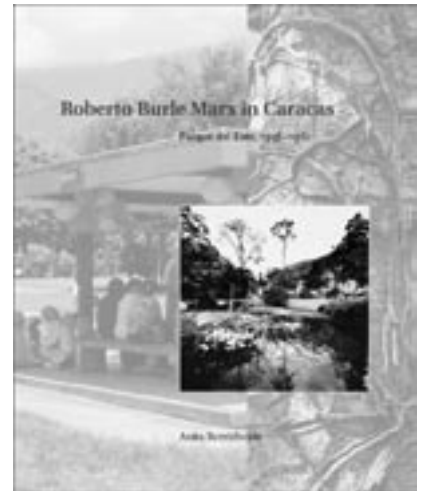
This Man's Army: A Soldier's Story from the Front Lines of the War on Terrorism; Andrew Exum, C '00. When he returned to the United States, he struggled to come to terms with the intense media coverage and public misperceptions of the war, while seeking to make peace with the man he had become. *This Man's Army* is the story of that journey. Cloth \$25.



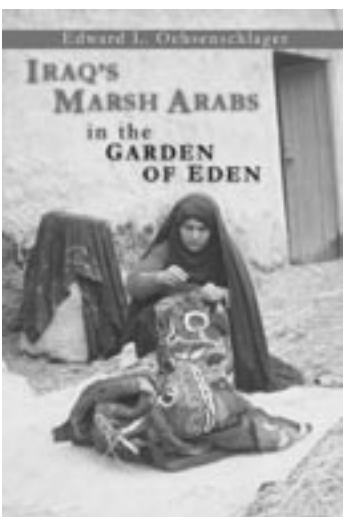
The New Ethics: A Guided Tour of the Twenty-First Century Moral Landscape; Anita L. Allen, Henry R. Silverman Professor of Law. Ethics professor Anita Allen, drawing from her own experiences as an African-American woman, a wife in a mixed-race marriage, a mother, a scholar, and a teacher, examines the new world we find ourselves in and the choices we make as we navigate through it. Cloth \$23.95.



The Varieties of Political Experience in Eighteenth-Century America; Richard R. Beeman, professor of history. This ambitious overview of political life in pre-Revolutionary America ranges from Virginia, Massachusetts, New York, South Carolina, and Pennsylvania to the backcountry regions of the South, the Mid-Atlantic, and northern New England. Penn Press. Cloth \$39.95.



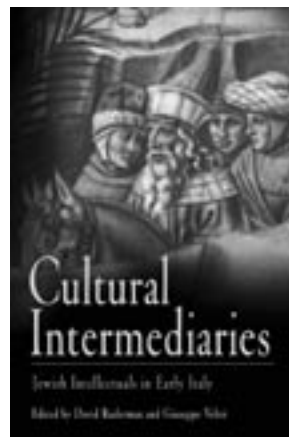
Roberto Burle Marx in Caracas, Parque del Este, 1956-1961; Anita Berrizbeitia, associate professor of landscape architecture and regional planning. The only in-depth study of this major site, a 200-acre urban park built between 1956-1961, and offers an approach for future studies of the Venezuelan and Latin American landscape. Penn Press. Cloth \$39.95.



Iraq's Marsh Arabs in the Garden of Eden; Edward L. Ochsenschlager. Loaded with 150 illustrations, including rare 19th century glass plate prints from Museum's Archives and 32 contemporary color plates, this fascinating narrative chronicles life in the marshes before Saddam Hussein drained the wetlands, irrevocably changing tribal life. Penn Museum. Cloth \$39.95.



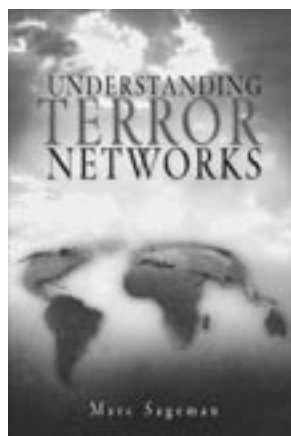
The Afterlife of Gardens; John Dixon Hunt, professor of the history and theory of landscape in the department of landscape architecture at School of Design. Provides a fresh approach to the study of designed landscapes that goes beyond their production and into how they exist and are understood by their users. Penn Press. Cloth \$45.



Cultural Intermediaries: Jewish Intellectuals in Early Modern Italy; edited by David B. Ruderman, Joseph Meyerhoff Professor of Modern Jewish History and director of the Center for Advanced Judaic Studies, and Giuseppe Veltri. Chronicles the lives and thinking of ten Jewish intellectuals of the Renaissance, nine of them from Italy and one a Portuguese exile who settled in the Ottoman empire after a long sojourn in Italy. Penn Press. Cloth \$55.

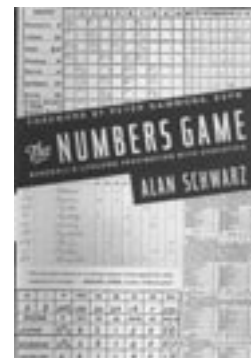


Topographical Stories—Studies in Landscape and Architecture; David Leatherbarrow, professor of architecture and chairman of the Graduate Group in Architecture. An entirely new way of thinking of architecture and landscape architecture. Moving beyond partisan arguments, he shows how the two disciplines rely upon one another to form a single framework of cultural meaning. Penn Press. Cloth \$55.



Understanding Terror Networks; Marc Sageman, who teaches psychiatry and psychology, and at the Solomon Asch Center for the Study of Ethno-political Conflict, challenges conventional wisdom about terrorism in this unprecedented social study of the Global Salafi Jihad, observing that the key to mounting an effective defense against future attacks is a thorough understanding of the networks that allow these new terrorists to proliferate. Penn Press. Cloth \$29.95.

Numbers Game: Baseball's Lifelong Fascination with Statistics; Alan Schwarz, C'90. In this unprecedented new book, he provides the first-ever history of baseball statistics, showing how baseball and its numbers have been inseparable ever since the pastime's birth in 1845. Cloth \$24.95.



Gifts of Involvement

These are appropriate for ardent aficionados and advocates of anthropology/archaeology, art, arboreta, and academe.

Stage Spectacular: Penn Presents will stage numerous shows including classical, gospel and jazz music; ballet, modern and tap dance; and world discovery performances now through May. To subscribe, or for information: (215) 898-3900 or www.pennpresents.org.



Sweet Sounds: WXPX 88.5 FM, Penn's member-supported radio station offers several membership choices for those who enjoy discovering emerging artists and re-discovering some old favorites. For \$60, the music-lover gets an 2004 New Music CD. For \$75, the recipient gets a choice of 'XPX 2005 calendar: 885 Greatest Songs of All Time; 'XPX baseball t-shirt; *Live at the World Café* volume 18, *I'll Take You There; For the Kids, Too* CD. Information: www.xpn.org.

World Café Live provides a year-round musical venue of live performances as well as a restaurant serving breakfast, lunch and dinner. For information see www.worldcafelive.com/.



Literary Lovers: *Friends of the Kelly Writers House* help sustain seminars, readings and webcasts. Friends will be acknowledged in the electronic Annual Report which is available on their web site and in print annually. Membership fees: \$40, \$100, \$250, \$500, and William Carlos Williams Circle \$1,000 or more.



Information: (215) 573-WRIT, ask for Jennifer Snead, director, or www.english.upenn.edu/~wh/support/become.html.

Library Friends are invited to exhibition openings and other special events. Information: (800) 390-1829 or <https://galaxy.isc-seo.upenn.edu/pls/devadmin/dvpk0100.nv00> and select library.

Caring Cravats: *Friends of the School of Social Work* are invited to support the School's Scholarship Fund this Holiday Season. With a \$25 donation, supporters receive a Rivetz of Boston silk tie of their choice as SSW's gift. They have, bowties and neckties—from serious to seasonal—nutcrackers and snowmen, whales and dolphins, stars and stripes. Stop in the Caster Building, 3701 Locust Walk, or call (215) 898-5526. While supplies last.

What a Wonderful World: *International House* members receive \$1 off all film screenings at I-House, \$1 off Philadelphia

Film Festival tickets and e-mail announcements for advance screenings of major motion pictures, program guide and *Mosaic* by mail. Individual \$40, Household \$60, Contributing Member Individual \$100/Household \$150, Sustaining Member Individual \$250/household \$300 World Member \$500, Internationalist Member \$1,000. Call (215) 895-6553.

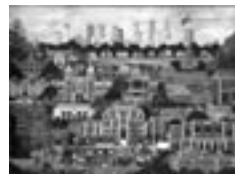
Marvelous Museum: Those who treasure the past will be delighted with a full year's membership to the *University of Pennsylvania Museum of Archaeology and Anthropology*. They will enjoy free admission, Museum Shop discounts, invitations to openings and other members-only events, and *Expedition Magazine*; and they will be kept up-to-date about the latest discoveries from the Museum's worldwide fieldwork and research. The gift membership will be mailed. Student membership \$35, Dual Student memberships \$50, Associate membership \$45, Individual membership is \$50, dual membership \$60, household \$75, sustaining \$125, patron \$250, and fellows \$500. Information: (215) 898-5093 or www.museum.upenn.edu/new/members/membership/membership.shtml.



Alluring Art: Members of the *Institute of Contemporary Art* receive free admission to the exhibitions, lectures and programs, invitations to preview opening receptions and the annual benefit, a calendar listing lectures, programs, tours, and special events, 20% discounts on ICA catalogues, use of the ICA library, and discounts on selected Penn Presents programs. Individuals \$40; family \$100; contributor \$250; participating \$500; benefactor \$1,000; with additional membership bonuses for each. Information: (215) 573-0217 or www.icaphila.org/support/.

Arthur Ross Gallery offers those who contribute \$50 or more, invitations to preview opening receptions and special events and the schedule of upcoming exhibitions, in addition to the free admission to exhibitions, lectures, and programs. New members who mention this *Almanac* listing can select a free catalogue from the already discounted publications on sale in the Gallery. For more information: (215) 898-3617.

Generations of Tradition, a lithograph of the University campus by Jane Wooster Scott, is available at four different prices depending on the edition: \$150, \$200, \$400, \$1,000. Profits benefit the Shoemaker Fund for Women's Athletics. Information: (215) 898-6123.



THE BRIDGE Cinema de Lux shows both major studio and high profile independent films. Gift Certificates are accepted toward all purchases, including 12 Lounge. Gift Certificates are available in single denominations in books of \$25. Gift Certificates can be purchased online at www.thebridgecinema.com or at the Elite Services desk in lobby.



Botanical Beauty: Members of the *Morris Arboretum*, Pennsylvania's official arboretum, receive free admission, free bonus plant, orientation tour and reception, 10% course discounts, the quarterly newsletter, plant sale benefits, access to the Reciprocal Admissions Program, gift shop discounts, and invitations to events and lectures. Membership fees are: Beech \$90, Chestnut \$150, Holly \$250, Oak \$500, and Laurel \$1,000. Membership form is online at www.museum.upenn.edu/new/members/membership/membership.shtml. For your favorite gardener, the Arboretum Gift Shop has a full line of garden-inspired home items, toys and the latest horticulture publications for the professional and amateur. Call the Morris Arboretum Gift Shop: (215) 247-5777.

Delectible Delights: *Houston Market* gift certificates in the amount of \$10 are available for purchase at Houston Market.



The Faculty Club offers faculty and staff in their first year at the University a year of membership free; you could make a deposit into a declining balance account for the member to enjoy meals at the Club. Gift certificates for membership are \$50, a Club mug is \$5.70, gift certificates for dining are available. Information: (215) 898-4618 or e-mail fsaclub@pobox.upenn.edu.



Feeling Fit: *The Class of 1923 Ice Rink* offers a discount book of 10 admission passes to any public skating session for \$40 with a PennCard or \$50 for the public. Why not stuff a stocking with skating lessons? Six weeks of group lessons, beginning week of January 9, are available for ages 6 through adult in a variety of skill levels. The registration deadline is January 2. Cost \$100. Information: (215) 898-1923.



Levy Tennis Pavilion memberships are \$15 students and spouses, \$30 faculty, staff and spouses, \$50 alumni, \$75 public, \$35 senior citizens, \$6 guest fee; valid through August 2005. Information: (215) 898-4741.

The Department of Recreation offers gift certificates for the *Penn Running Store*, and *The Energy Zone*. Information: (215) 898-6100 or visit www.upenn.edu/recreation.

The Men's Basketball Club offers various gift levels from \$25 to \$1,500+ with benefits that increase with the level. Benefits include invitation to Club receptions, *Hoopenings*, media guide, Club memento, and preferred seating. Information: (215) 898-4717.